



**** CLOSEOUT EQUIPMENT SALE ****

**** SET-IN-PLACE DELIVERY AVAILABLE \$75.00 / UNIT - NEW EQUIPMENT FULL MFG. WARRANTY - USED EQUIPMENT NO WARRANTY AVAILABLE - 14 DAY RETURN POLICY ONLY FOR DEFECTIVE UNITS ****

12/16/2020

REACH-IN REFRIGERATOR Norpole, Inc. Model NP1R (#904225)

\$1,650.00 ea

****NEW**** Reach-in Refrigerator, one-section, 23 cu. ft., (1) solid door, LED digital temperature display, (3) PVC coated adjustable shelves, interior lighting, heavy-duty castor wheels, stainless steel exterior & interior, aluminum back panel, self-contained refrigeration, bottom mounted compressor, R290 refrigerant, 1/5 HP, 115v/60/1-ph, 2.6 amps, NEMA 5-15P, cETLus, ETL-Sanitation



REACH-IN FREEZER Norpole, Inc. Model NP1F (#903754)

\$1,950.00 ea

****NEW**** Reach-in Freezer, one-section, 23 cu. ft., (1) solid door, LED digital temperature display, (3) PVC coated adjustable shelves, interior lighting, heavy-duty castor wheels, stainless steel exterior & interior, aluminum back panel, self-contained refrigeration, bottom mounted compressor, R290 refrigerant, 1/2+ HP, 115v/60/1-ph, 7.1 amps, NEMA 5-15P, cETLus, ETL-Sanitation



REFRIGERATED WORK TOP Delfield Model 402P (#960045)

\$550.00 ea

****USED**** Work Top Refrigerator, single-section, 27" W, 5.7 cubic feet, (1) door, (1) epoxy coated wire shelf, stainless steel top with 4" backsplash, stainless steel top, front & sides, ABS interior, 6" legs, rear-mounted refrigeration system, R290 Hydrocarbon refrigerant, 1/5 HP, 115v/60/1-ph, 4.0 amps, 6' cord, NEMA 5-15P, cUL, UL, NSF



BACKBAR COOLER, FRONT BREATHING Continental Refrigerator Model BB69NSGD (#960006)

\$1,750.00 ea

****USED**** Refrigerated Back Bar Cooler, 69"W, 34-3/4"H, stainless steel top, 26.0 cubic feet, front breathing, sliding glass doors, electronic controller with digital display & hi-low alarm, black enamel finish exterior, stainless steel interior back & side panels with reinforced stainless steel floor, epoxy coated steel shelves, self-contained refrigeration, 1/4 HP, cETLus, NSF, Made in USA



BACKBAR COOLER, FRONT BREATHING Continental Refrigerator Model BB69NSGD (#960006)

\$1,750.00 ea

****USED**** Refrigerated Back Bar Cooler, 69"W, 34-3/4"H, stainless steel top, 26.0 cubic feet, front breathing, sliding glass doors, electronic controller with digital display & hi-low alarm, black enamel finish exterior, stainless steel interior back & side panels with reinforced stainless steel floor, epoxy coated steel shelves, self-contained refrigeration, 1/4 HP, cETLus, NSF, Made in USA



BACK BAR CABINET, REFRIGERATED SABA Model SBB-24-60GSS (#903925)

\$2,000.00 ea

****NEW**** Back Bar Cooler, two-section, 60-3/4" W, 15.8 cu. ft./446 liter capacity, (2) glass doors, (4) shelves, LED interior lighting, digital temperature control, range 33°F to 38°F, R134a refrigerant, self-contained side mounted refrigeration, stainless steel exterior, (4) 4" casters, 1/3 HP, 115v/60/1-ph, 6.4 amps, NEMA 5-15P, cETLus, NSF



BACK BAR CABINET, REFRIGERATED
Spartan Refrigeration
Model VBB-7.3 (#904204)

\$1,250.00 ea

****NEW**** Vault Beer Cooler, two-section, 35-2/5"W, 7.3 cu. ft., rear mounted self-contained refrigeration, 23° to 33°F temperature range, (2) self-closing hinged glass doors, (4) shelves, LED lighting, stainless steel construction, R600a, 1/10 HP compressor, 115v/60/1-ph, 1.6 amps, cord, NEMA 5-15P, cETLus, NSF



BROILER, GAS, CONVEYOR TYPE
Nieco Corporation
Model JF143G (#960007)

\$2,250.00 ea

****USED**** Conveyor Broiler, gas, countertop design, (1) 22" broiling belt, automatic stack feeder, BroilVection™ technology, digital control system, stainless steel construction, w/ s/s stand and casters, 58,000 BTU, cETLus, NSF, CE, Made in USA



BROILER, GAS, CONVEYOR TYPE
Nieco Corporation
Model JF143G (#960007)

\$2,250.00 ea

****USED**** Conveyor Broiler, gas, countertop design, (1) 22" broiling belt, automatic stack feeder, BroilVection™ technology, digital control system, stainless steel construction, w/ s/s stand and casters, 58,000 BTU, cETLus, NSF, CE, Made in USA



HOTPLATE, COUNTERTOP, GAS
American Range
Model ARHP-12-2 (#960046)

\$200.00 ea

****USED**** Hotplate, gas, 12" wide, countertop, (2) 32,000 BTU open burner with 12" x 12" sectional cast iron top grates, manual controls, pilot, removable crumb tray, stainless front & sides, 19.0kW, 64,000 BTU, ETL, Made in USA



HOTPLATE, COUNTERTOP, GAS
Superior Products
Model HP-24-4 (#960010)

\$275.00 ea

****USED**** Superior Hotplate, counter top, gas, 24"W x 27-3/5"D x 13-1/10"H, (4) 25,000 BTU burners, manual controls, standby pilots, cast iron grates, stainless steel crumb tray, stainless steel structure, adjustable stainless steel legs, 100,000 BTU, cETLus, ETL-Sanitation



GAS FLOOR FRYER
ANETS
Model 14GS (#960048)

\$695.00 ea

****USED**** GoldenFry™ Fryer, gas, floor model, 35-50 lb. oil capacity, enclosed open fry tank, millivolt control, (2) twin nickel plated baskets, basket hanger, stainless steel tank, front, sides & door, 111,000 BTU, CSA, NSF



ELECTRIC FLOOR FRYER
Imperial
Model IFS-40-E (#960041)

\$975.00 ea

****USED**** Fryer, electric, floor model, 40lb. capacity, immersed electrical elements, snap action thermostat, includes: wire mesh crumb screen & (2) nickel-plated baskets, stainless steel front, door, sides, basket hanger & frypot, 6" legs, 14.0kW, cETLus, CSA-Sanitation, CE



RANGE, 36", 6 OPEN BURNERS
Imperial
Model IR-6 (#960050)

\$795.00 ea

****USED**** Pro Series Restaurant Range, gas, 36"W, (6) open burners, low simmer feature, cast iron grates, standard oven, porcelain interior, (1) chrome rack, round stainless steel chef's handle, removable crumb tray, stainless steel front, sides, backguard, shelf, 3-1/2"D landing ledge & kick plate, 6" legs with adjustable feet, 227,000 BTU, 67kW, NSF, CE, CSA Flame, CSA Star



RANGE, 36", 6 OPEN BURNERS
Garland/US Range
Model X36-6R (#960009)

\$550.00 ea

****USED**** Restaurant Range, gas, 36", (6) 30,000 BTU open burners, cast iron top & ring grates, standard oven, (1) oven rack, 2 position rack guides, stainless steel front, sides, plate rail, backguard, & high shelf, 6" steel core legs, 213,000 BTU, NSF, CSA ****OVEN NOT WORKING - TOP BURNERS ONLY****



GAS COUNTERTOP GRIDDLE
Keating
Model 60X30-G (#960051)

\$1,000.00 ea

****USED**** Miraclean® Griddle, gas, 60" W x 24" D cooking surface, 3/4" thick chrome finished griddle plate, 2" front & 3" left grease troughs, (3) zoned millivolt thermostatic heat controls, stainless steel front sides & back, 150,000 BTU, cETLus, ETL, NSF



GAS COUNTERTOP GRIDDLE
Southbend
Model HDG-60 (#960053)

\$1,200.00 ea

****USED**** Griddle, countertop, gas, 60" W x 24" D cooking surface, 1" thick polished steel plate, thermostatic controls, battery spark ignition, flame failure safety device, stainless steel front, sides & 4" adjustable legs, 150,000 BTU, CSA, NSF



HOT FOOD SERVING COUNTER / TABLE
Duke Manufacturing
Model 303 (#999270)

\$1,075.00 ea

****NEW**** Aerohot Steamtable Hot Food Unit, gas, 44-3/8"W x 22-7/16"D x 34"H, (3) 12" x 20" hot food wells with adjustable gas valve controls with adjustable pilot light, stainless steel top with 1/2" thick x 7" wide poly carving board, stainless steel open base with undershelf, legs & feet, UL EPH Classified, CSA Star



HOT FOOD SERVING COUNTER / TABLE
Duke Manufacturing
Model 303 (#960013)

\$795.00 ea

****USED**** Aerohot Steamtable Hot Food Unit, gas, 44-3/8"W x 22-7/16"D x 34"H, (3) 12" x 20" hot food wells with adjustable gas valve controls with adjustable pilot light, stainless steel top with 1/2" thick x 7" wide poly carving board, stainless steel open base with undershelf, legs & feet, UL EPH Classified, CSA Star



VERTICAL BROILER (GYRO), ELECTRIC
Optimal Automatics
Model 3PEM (#960047)

\$225.00 ea

****USED**** Vertical Broiler (Gyro), electric, countertop, 12 lbs. capacity, (1) heating element, includes: skewer, catch pan, drip pan & drip pan cover, stainless steel construction, NSF, Made in USA



COUNTERTOP PORTION STEAMER
Admiral Craft
Model CTS-1800W (#960043)

\$225.00 cs

****USED**** Fresh Shot Steamer, countertop, 1/2 size pan, push-button operation, top opening lid, self-contained water reservoir, 30 minute preheat, black powder coated top, cast aluminum well, stainless steel exterior, 120v/60/1-ph, 1800 watts, 15 amps, 4' cord, NEMA 5-15P, CE



FOOD SLICER, ELECTRIC
General
Model SM-12A (#960044)

\$350.00 ea

****USED**** Compact Slicer, manual, gravity feed, 12" diameter knife, built-in sharpener, permanent ring guard, knife cover interlock, square receiving plate, on/off power switch, overload protection, aluminum alloy base, anodized finish, 120v/60/1-ph, cord with NEMA 5-15P, NSF



HEAT LAMP

Hatco
Model GRAHL-120 (#960033)

\$750.00 ea

****USED**** Glo-Ray® Infrared Foodwarmer, 120" W, high wattage, tubular metal heater rod with lights, single heater rod housing, aluminum construction, 3400 watts, 120V, contains tandem elements, NSF, cULus, Made in USA

**HEAT LAMP**

Hatco
Model GRAL-60 (#960034)

\$375.00 ea

****USED**** Glo-Ray® Infrared Foodwarmer, 60" W, standard wattage with lights, tubular metal heater rod, aluminum construction, 1350 watts, 120V, NSF, cULus, Made in USA

**HEAT LAMP**

Hatco
Model GRAHL-72 (#960035)

\$395.00 ea

****USED**** Glo-Ray® Infrared Foodwarmer, 72" W, high wattage, tubular metal heater rod with lights, single heater rod housing, aluminum construction, 2085 watts, 120V, NSF, cULus, Made in USA

**HEAT LAMP**

Hatco
Model GRAL-36 (#960036)

\$225.00 ea

****USED**** Glo-Ray® Infrared Foodwarmer, 36" W, standard wattage with lights, tubular metal heater rod, aluminum construction, 755 watts, 120V, NSF, cULus, Made in USA

**MOBILE HEATED CABINET**

Metro
Model C539-HFC-4 (#960038)

\$1,175.00 ea

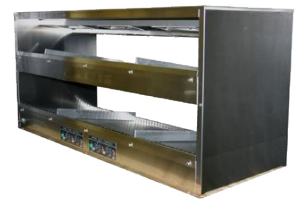
****USED**** C5™ 3 Series Heated Holding Cabinet, with Red Insulation Armour™, mobile, full height, insulated, clear polycarbonate door, removable bottom mount control module, thermostat to 200°F, fixed wire slides on 3" centers (18) 18" x 26" or (34) 12" x 20" x 2-1/2" pan capacity, 5" casters (2 with brakes), aluminum, 120v/60/1-ph, 2000 watts, 16.7 amps, NEMA 5-20P, cULus, NSF

**DISPLAY MERCHANDISER, HEATED, FOR MULTI-PRODUCT**

BKI
Model 2TSM-5024L (#960014)

\$950.00 ea

****USED**** Sandwich Warmer, 50" x 24", (2) shelves, countertop, slanted back, slot dividers, individual thermostatic controls, ceramic infrared top heat, bottom wire shelf, stainless steel construction, 4" legs, 208v/60/1-ph, 9.66amps, 1.83kW, ETL, cETL

**FRENCH FRY WARMER**

APW Wyott
Model PD-1A (#960015)

\$125.00 ea

****USED**** French Fry Warmer, portable, tubular metal heater rod, holds 12" x 20" of fractional pans (pans not included), stainless steel construction, NSF

**DISPLAY CASE, HEATED DELI, COUNTERTOP**

Antunes
Model DCH-320 (#960016)

\$750.00 ea

****USED**** Heated Display Cabinet, holds (3) full size pans 2-1/2" deep, stainless steel and curved tempered glass construction, digital display thermostat and electronic control, (2) 5 qt water trays, temperature range 100° F to 165° F, with white steel base on casters, 208/240V



HEAT LAMP

Thunder Group
Model SEJ90000 (#980020)

\$50.00 ea

****NEW**** Dual Heat Lamp, 23"H, freestanding, C-frame, adjustable arm, 2 lamps with bell-shaped shades, switch mounted on arm, includes 2 shatterproof food safe bulbs, aluminum, ETL 120v/60/1-ph, 500 watt (2-250 watt bulb)
****SCRATCH & DENT UNIT****

**RICE / GRAIN WARMER**

Town Equipment
Model 56916S (#500994)

\$175.00 ea

****NEW**** RiceMaster® Rice Warmer, electric, 18 quart liquid capacity, stainless steel exterior finish, 120v/60/1-ph, .8 amps, 100 watts, cETLus, NSF

**MEAT GRINDER, ELECTRIC**

Globe
Model CM12 (#904166)

\$750.00 ea

****NEW**** Chefmate™ Meat Chopper, #12 head size, 250 lbs. meat/hour, manual reset motor overload protection, stainless steel housing, cylinder, worm gear & adjusting ring, includes: (1) knife, (1) stainless steel product tray, (1) 1/4" plate, (1) 5/16" plate, (1) stuffing tube (requires stuffing plate-not included), & (1) polycarbonate pusher, 1 HP, 115v/60/1-ph, 11.0 amps, NEMA 5-15P, cETLus, ETL-Sanitation (for beef, pork, venison only - NO poultry, cheese or vegetables)

**HAMBURGER PATTY PRESS, COUNTERTOP**

American Eagle Food Machinery
Model AE-HP100 (#998898)

\$200.00 ea

****NEW**** Hamburger Press, manual, 4" dia., 2 oz. - 8 oz. portions, 1/4" - 1" thick patties, stainless steel food contact surfaces, top mounted wax paper liner holder, cast aluminum body, rubber feet, CE, NSF



COMMERCIAL FOOD BLENDER
Uniworld Foodservice Equipment
Model LE-5 (#400060)

\$1,035.00 ea

****NEW**** Blender, countertop, 1.32 gallon capacity, push button, stainless steel construction, 1/2 HP, 3500 RPM, 110v/60/1ph

**BEVERAGE DISPENSER, ELECTRIC (COLD)**

Grindmaster-Cecilware
Model E29-3 (#999838)

\$750.00 ea

****NEW**** Crathco® Classic Bubbler® Mini-Twin Pre-Mix Cold Beverage Dispenser, electric, (2) 2.4 gallon clear polycarbonate bowls & covers, 2-piece stainless steel dripless dispense valves, 35°to 41°F temperature range, 8" cup clearance, includes spray & agitate circulation options, stainless steel side panels & drip tray, R134a, 1/6 HP, cULus, NSF

**DISHWASHER, DOOR TYPE**

CMA Dishmachines
Model E-AH-EXT (#997253)

\$3,000.00 ea

****NEW**** Energy Miser® Dishwasher, door type, 25-3/4" W, low temperature chemical sanitizing, top mounted controls, straight-thru design, (40) racks/hour, external sump, Poly Pro™ scrap accumulator, auto start/stop, stainless steel construction, 20-1/2" tall pan clearance, 1 HP wash pump, ENERGY STAR®, ETL-Sanitation, cULus

**SOILED DISHTABLE**

Elkay Foodservice Products
Model DDT-48-LX (#960018)

\$550.00 ea

****USED**** Soiled Dishtable, 1-1/2" rolled rim design, 48"W x 30"D (O.A.), 34" working height, 10-3/4"H backsplash, stainless steel legs, left-to right operation, 16 gauge 300 series stainless steel, NSF



CLEAN DISHTABLE

Elkay Foodservice Products
Model CDT-72-RX (#960019)

\$375.00 ea

****USED**** Clean Dishtable, 1-1/2" rolled rim design, 72"W x 30"D (O.A.), 34" working height, 10-3/4"H backsplash, stainless steel legs, left-to-right operation, 16 gauge 300 series stainless steel, NSF

**THREE (3) COMPARTMENT SINK**

BK Resources
Model BKS-3-18-14-18T (#900286)

\$650.00 ea

****NEW**** Sink, three compartment, 90"W x 23-13/16"D x 43-3/4"H overall size, 18" wide x 18" front-to-back x 14" deep compartments, (2) left & right 18" drainboards, 9"H backsplash, 8" OC splash mount faucet holes, 1-1/2" rolled edges on front & sides, includes basket drains (BKDR-4), 18/304 stainless steel construction, galvanized steel legs, adjustable high impact corrosion resistant feet, NSF ****2EA AVAILABLE****

**TWO (2) COMPARTMENT SINK**

BK Resources
Model BKS-2-24-14-24T (#900224)

\$750.00 ea

****NEW**** Sink, two compartment, 96"W x 29-13/16"D x 43-3/4"H overall size, 24" wide x 24" front-to-back x 14" deep compartments, (2) left & right 24" drainboards, 9"H backsplash, 8" OC splash mount faucet holes, 1-1/2" rolled edges on front & sides, includes basket drains (BKDR-4), 18/304 stainless steel construction, galvanized steel legs, adjustable high impact corrosion resistant feet, NSF

**ONE (1) COMPARTMENT SINK**

BK Resources
Model BKS-1-24-14 (#900295)

\$350.00 ea

****NEW**** Sink, one compartment, 29"W x 29-13/16"D x 43-3/4"H overall size, 24" wide x 24" front-to-back x 14" deep compartment, 9"H backsplash, 8" OC splash mount faucet holes, 1-1/2" rolled edges on front & sides, 18/304 stainless steel deck & bowl, galvanized steel legs, adjustable high impact corrosion resistant feet, NSF

**HAND SINK**

BK Resources
Model BKHS-D-1616-SS (#208041)

\$275.00 ea

****NEW**** Hand Sink, wall mount, 16" wide x 16" front-to-back x 10" deep bowl, single deck mount faucet hole, side splashes on left & right, knee valve bracket (knee valve & spout sold separately), 11"H backsplash, includes mounting hardware, 16/304 stainless steel construction, NSF

**HAND SINK**

BK Resources
Model BKHS-W-1410-RS-P-G (#904260)

\$145.00 ea

****NEW**** Hand Sink, wall mount, 14" wide x 10" front-to-back x 5" deep bowl, 4" O.C splash mount faucet (BKF-W-3G-G, lead free), marine edge, side splash on right, includes basket drain & wall mounting hardware, 304 stainless steel construction, NSF

**MOP SINK**

BK Resources
Model BKMS-2424-12-KIT (#900274)

\$350.00 ea

****NEW**** Mop Sink Kit, floor mount, 28-3/4"W x 27-1/2"D x 18-3/8"H overall size, 24" wide x 24" front-to-back x 12" deep bowl size, (1) 3-1/2" heavy duty brass basket drain (BKDR-HD4), (1) 48" service faucet hose (BK-SFH-48), (3) skirted sides, (1) service faucet with vacuum breaker (BKSF-WB1), (1) 5-slot utility tool holder with (6) plastic hooks (BK-UTH-5), 18/304 stainless steel

**DRAINBOARD**

BK Resources
Model BKUBD-30-18S (#900222)

\$275.00 ea

****NEW**** Underbar Drain Board, 30"W x 18-1/4"D x 32-1/2"H, 18/304 stainless steel, stamped drainboard, drain included (BKDR-15CP), stainless legs & side bracing, adjustable high impact corrosion resistant feet, NSF



DRAINBOARD**BK Resources****Model UB4-21-DB24 (#904256)****\$275.00 ea**

****NEW**** Underbar Drain Board, 24"W x 21-1/4"D x 32-1/2"H, 18/304 stainless steel, stamped drainboard, drain included (BKDR-15CP), stainless legs & side bracing, adjustable high impact corrosion resistant feet, NSF

**UNDERBAR SINK UNITS****BK Resources****Model BKUBW-248TS (#900217)****\$350.00 ea**

****NEW**** Slim-Line Underbar Sink, two compartment, 48"W x 18-1/4"D x 32-1/2"H overall size, 10" wide x 14" front-to-back x 10" deep compartments, (2) left & right 13-3/16" stamped drainboards, 4-1/2"H backsplash, 4" OC splash mount lead-free faucet (BKF-W2-10-G), stainless steel apron on front & sides, includes basket drains (BKDR-2) & removable overflow standpipes (BK-OT-15075), 18/304 stainless steel construction, stainless steel legs & adjustable side bracing, adjustable high impact corrosion resistant feet, NSF ****SLIGHT SCRATCHES ON FRONT****

**STORAGE CABINET****Advance Tabco****Model PRSCD-24-24-M (#999553)****\$500.00 ea**

****NEW**** Prestige Underbar Drainboard Cabinet, with removable hinged doors, 24"W x 30"D x 36"H, 7" backsplash, removable perforated drainboard top, drain pan with 1" drain, (1) fixed mid-shelf in cabinet, stainless steel construction, adjustable stainless steel bullet feet, NSF

**EQUIPMENT STAND, FOR COUNTERTOP COOKING****Connerton****Model CES-28-30-C (#907039)****\$275.00 ea**

****NEW**** Equipment Stand, 30"W x 30"D x 26"H, 1" lip on sides and back, welded stainless steel construction, undershelf, with casters, NSF

**EQUIPMENT STAND****Royal Industries****Model ROY ES 3036 (#907041)****\$195.00 ea**

****NEW**** Equipment Stand, 30" x 36", 800 lb capacity, front rolled edge, 3-sided riser with hemmed edge, stainless steel top, galvanized undershelf and legs, bullet feet, NSF ****2EA AVAILABLE****

**EQUIPMENT STAND****Royal Industries****Model ROY ES 3048 (#960021)****\$150.00 ea**

****USED**** Equipment Stand, 30" x 48", 900 lb capacity, front rolled edge, 3-sided riser with hemmed edge, stainless steel top, galvanized undershelf and legs, bullet feet, NSF

**EQUIPMENT STAND****Royal Industries****Model ROY ES 3060 (#960042)****\$125.00 ea**

****USED**** Equipment Stand, 30" x 60", 900 lb capacity, front rolled edge, 3-sided riser with hemmed edge, stainless steel top, galvanized undershelf and legs, bullet feet, NSF ****RIGHT S/S LIP CUT OFF****

**WORK TABLE, STAINLESS STEEL TOP****Royal Industries****Model ROY WT 3048 (#960023)****\$100.00 ea**

****USED**** Work Table, 48"W x 30"D, bullnose edge front and back, galvanized undershelf and legs, plastic feet, 18 gauge 430 stainless steel top, NSF



WORK TABLE, STAINLESS STEEL TOP
Royal Industries
Model ROY WT 2472 (#960052)

\$150.00 ea

****USED**** Work Table, 72"W x 24"D, bullnose edge front and back, galvanized undershelf and legs, plastic feet, 18 gauge 430 stainless steel top, NSF



WORK TABLE, STAINLESS STEEL TOP
Thunder Group
Model SLWT43096F (#907113)

\$325.00 ea

****NEW**** Work Table, 30" x 96" x 35", 18 gauge/430 stainless steel flat top, turn-down edges, galvanized steel adjustable undershelf & 6 legs, 1" adjustable plastic bullet feet, KD, NSF



WORK TABLE, CABINET BASE OPEN FRONT
BK Resources
Model BKDCR5-2448 (#904258)

\$575.00 ea

****NEW**** Work Table, cabinet base with open front, 5" riser top, 48"W x 24"D, 14/304 stainless steel top, 18/304 stainless steel body, 6" stainless steel adjustable legs, NSF ****2EA AVAILABLE****



WORK TABLE, CABINET BASE OPEN FRONT
BK Resources
Model (#960040)

\$450.00 ea

****USED**** Work Table, cabinet base with open front, 5" riser top, 48" W x 32" D, 14/304 stainless steel top, 18/304 stainless steel body, fixed s/s mid-shelf, 6" stainless steel adjustable legs, NSF



OVERSHELF
BK Resources
Model BK-OSD-1872 (#999695)

\$225.00 ea

****NEW**** Double Overshelf, table mount, 72"W x 18"D x 31-1/4"H, 18/304 stainless steel, adjustable lower shelf, self tapping screws, shipped KD, NSF



SHELVING, WALL MOUNTED
BK Resources
Model BKWS-1624 (#908215)

\$75.00 ea

****NEW**** Premium Shelf, wall-mounted, 24"W x 16"D, 18/304 stainless steel, 1-1/2"H rear up-turn, (2) 11-1/2" angle supports, NSF ****2EA AVAIL****



DUNNAGE RACK
Thunder Group
Model ALDN2060 (#908247)

\$50.00 ea

****NEW**** Dunnage Rack, 20" x 60" x 12", capacity 2100 lbs., heavy-duty, square tubing, welded, aluminum, NSF ****4EA AVAILABLE****



SHELVING, WALL MOUNTED
BK Resources
Model BKWS-1696 (#904033)

\$175.00 ea

****NEW**** Premium Shelf, wall-mounted, 96"W x 16"D, 18/304 stainless steel, 1-1/2"H rear up-turn, (3) 11-1/2" angle supports, NSF



TRASH RECEPTACLE, CABINET STYLE
Oak Street
Model M8520-BLK-UNASSEMBLED
(#960026)

\$125.00 ea

****USED**** Trash Receptacle, 24" x 24" x 43"H, 3-3/4" backsplash, "Thank You" swing door, melamine, dark walnut finish



LAMINATE TABLE TOP
JustChair Manufacturing
Model TTLMVM-2847 (#960027)

\$50.00 ea

****USED**** Table Top, rectangular, 28" x 47", black vinyl T-mold edge, Wilsonart® laminate Light Brown Speckle ****4EA AVAILABLE****



LAMINATE TABLE TOP
JustChair Manufacturing
Model TTLMVM-2847 (#960027)

\$50.00 ea

****USED**** Table Top, rectangular, 28" x 47", black vinyl T-mold edge, Wilsonart® laminate Red ****2EA AVAILABLE****



LAMINATE TABLE TOP
JustChair Manufacturing
Model TTLMVM-2847 (#960027)

\$50.00 ea

****USED**** Table Top, rectangular, 28" x 47", black vinyl T-mold edge, Wilsonart® laminate Grey Speckle ****6EA AVAILABLE****



LAMINATE TABLE TOP
JustChair Manufacturing
Model TTLMVM-2823 (#960028)

\$30.00 ea

****USED**** Table Top, rectangular, 28" x 23", black vinyl T-mold edge, Wilsonart® laminate Grey Speckle ****4EA AVAILABLE****



LAMINATE TABLE TOP
JustChair Manufacturing
Model TTLMVM-2823 (#960028)

\$30.00 ea

****USED**** Table Top, rectangular, 28" x 23", black vinyl T-mold edge, Wilsonart® laminate Red ****4EA AVAILABLE****



LAMINATE TABLE TOP
JustChair Manufacturing
Model TTLMVM-36R (#960029)

\$50.00 ea

****USED**** Table Top, 36" Round, black vinyl T-mold edge, Wilsonart® laminate Grey Speckle ****1EA AVAILABLE****



LAMINATE TABLE TOP
JustChair Manufacturing
Model TTLMVM-36R (#960029)

\$50.00 ea

****USED**** Table Top, 36" Round, black vinyl T-mold edge, Wilsonart® laminate Red ****2EA AVAILABLE****



LAMINATE TABLE TOP
JustChair Manufacturing
Model TTLMVM-48R (#960030)

\$60.00 ea

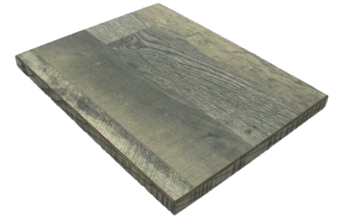
****USED**** Table Top, 48" Round, black vinyl T-mold edge, Wilsonart® laminate Grey Speckle ****1EA AVAILABLE****



LAMINATE TABLE TOP
JMC Furniture
Model 36X36 BARNWOOD LAMINATE (#904110)

\$150.00 ea

Barnwood Laminate Table Top, 36" x 36", square, 1-1/4" thick solid wood worn edge, particle board center, reclaimed oak laminate finish ****2EA AVAIL - SMALL CHIPS ALONG TABLE EDGE****



METAL TABLE BASE
American Trading/ATC Furniture
Model 1000-26-3P (#997371)

\$65.00 ea

****USED**** Litchfield Table Base, 26" x 26" spread, 28" dining height, 3-leg base, cast iron with black epoxy powder coat finish, maximum table top size 32" square or 36" round, designed for indoor use ****8EA AVAILABLE****



METAL TABLE BASE
American Trading/ATC Furniture
Model 1000-32-4P (#997370)

\$75.00 ea

****USED**** Litchfield Table Base, 32" x 32" spread, 28" dining height, 4-leg base, cast iron with black epoxy powder coat finish, maximum table top size 48" square or 60" round, designed for indoor use ****8EA AVAILABLE****



METAL TABLE BASE
FLAT Tech Inc
Model CT4206 (#997381)

\$85.00 ea

****USED**** PT23 Table Base, bar height, (2) 22-3/5" end base, 2-5/9" dia. column, 11-2/5" x 11-2/5" mounting plate, European style, hydraulic PAD stabilization technology, cast iron, textured finish, max tabletop size: 30" x 70" rectangular ****17EA AVAILABLE****



METAL TABLE BASE
FLAT Tech Inc
Model CT4201 (#997400)

\$65.00 ea

****USED**** PX23 Table Base, bar height, 22-3/5" cross base, 2-5/9" dia. column, 11-2/5" x 11-2/5" mounting plate, European style, hydraulic PAD stabilization technology, cast iron, textured finish, max tabletop size: 26" round and 24" square (ships in 3 boxes)



METAL TABLE BASE
FLAT Tech Inc
Model CT4200 (#907412)

\$50.00 ea

****USED**** PX23 Table Base, dining height, 22-3/5" cross base, 2-5/9" dia. column, 11-2/5" x 11-2/5" mounting plate, European style, hydraulic PAD stabilization technology, cast iron, textured finish, max tabletop size: 36" round and 30" square ****9EA AVAILABLE****



METAL TABLE BASE
FLAT Tech Inc
Model CT4205 (#907413)

\$75.00 ea

****USED**** PT23 Table Base, dining height, (2) 22-3/5" end base, 2-5/9" dia. column, 11-2/5" x 11-2/5" mounting plate, European style, hydraulic PAD stabilization technology, cast iron, textured finish, max tabletop size: 36" x 84" rectangular



BRACKET

Royal Industries
Model ROY RTB CANT (#960031)

\$50.00 ea

****USED**** Cantilever Booth
Bracket, 26-7/8" x 19-5/8"
****6EA AVAILABLE****

**BOOTH**

Custom
Model (#960032)

\$250.00 ea

****USED**** L-Corner Booth, 51" x
42" x 46" H, walnut wood base,
brown vinyl seat ****3EA
AVAILABLE****

UNDERCOUNTER REFRIGERATOR

Entree
Model UR48-Q

\$1,500.00 ea

Undercounter Refrigerator, two-section,
48.2" W, 12.0 cu. ft., (2) solid hinged self
closing door with full length handle & shelf,
thermostat, digital display, stainless steel
front & sides, aluminum back, (4) 3" casters
(2 front brakes), rear mounted self-
contained slide out condenser, 3/8 HP,
115/60/1-ph, 3.0 amps, NEMA 5-15P, 10
ft. cord, cETLus, ETL-Sanitation, ENERGY
STAR® (Note: only available by authorized
distributors via container load.)

